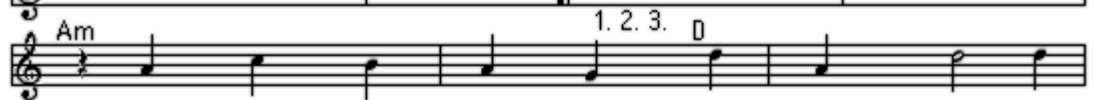
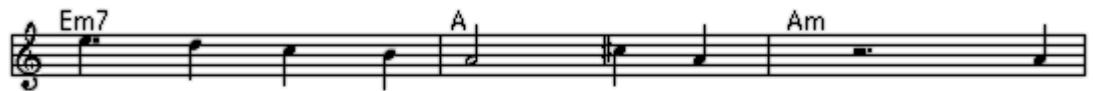


Do You Believe in Love?

Words and Music by Bill Morris



1. The first time that I saw her face I
 2. That first time when her eyes touched mine I
 3. The first time that I kissed her lips I



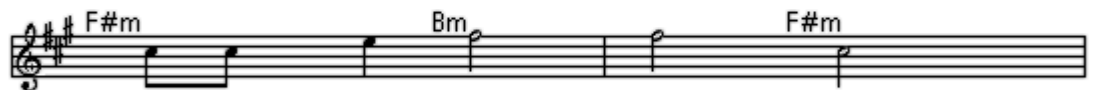
nev - er wanted to fall in love. Now
 really tried not to fall for her. But
 guess I broke down and fell in love. I



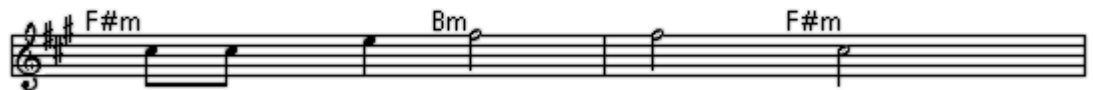
no one else can take her place. Oh,
 now I see that love is fine. Oh,
 nev - er knew it could be like this. Oh,



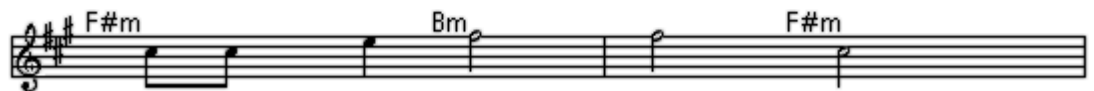
I be - lieve in love.
 I be - lieve in love.
 I be - lieve in love.



1. 2. 3. Do you be - lieve in love?



Can you con - ceive of love?



Can it be real this love? 3. to ♯



Oh, I be - lieve in love.