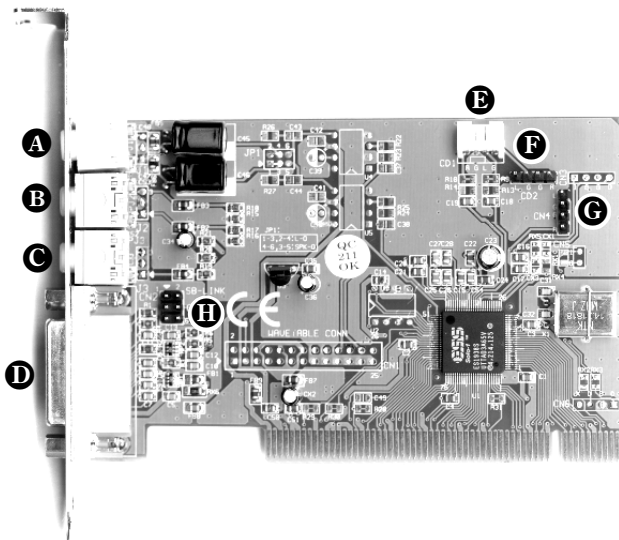


Dear Customer,

In the following Quick Reference Guide, replace the <CD> symbol with the drive letter assigned to your CD-ROM.



- A** Line Out
- B** Line In
- C** Mic In, mono
- D** MIDI / Joystick interface
- E** Internal CD Audio Connection IDE (CD1 White: right - ground - left - ground)
- F** Internal CD audio connector (SONY) (CD2: right - ground - ground - left)
- G** Internal Aux In, stereo (CN4: right - ground - ground - left)
- H** SB link

TECHNICAL DATA.

COMPATIBILITY

- PCI Plug & Play
- Microsoft DirectSound / 3D
- General MIDI
- MPU-401 compatible
- SoundBlaster/PRO
- OPL3 compatible hardware FM synthesis

DIGITAL AUDIO.

- VSpace 3D Effect
- 8/16-bit audio stereo/mono for recording and playback with up to 48 kHz
- Full Duplex
- Record and playback all audio sources

SOFTWARE WAVETABLE.*

- 32 voices, simultaneous
- 1 MB & 3MB Sample set
- GM compatible

AUDIO MIXER.

- Individual level controls for all audio sources

MIDI/JOYSTICK INTERFACE.

- DirectInput compatible
- MPU-401 (UART mode) compatible
- SoundBlaster MIDI interface
- Standard dual gameport (Y-cable)

* Not available under Windows NT 4.0

EXTERNAL CONNECTIONS.

- Line Out (3,5 mm jack)
- Line In (3,5 mm jack)
- Mic In (3,5 mm jack)
- MIDI/joystick interface (IBM 15-pin Sub-D)

ONBOARD CONNECTIONS.

- IDE/Sony CD audio connectors
- Aux In, stereo

SYSTEM REQUIREMENTS.

- One free PCI 2.1 compatible PCI slot
- P166, P200 MMX recommended
- 16MB, 32MB recommended
- CD-ROM drive for Software & Driver CD
- 10 MB free hard disk space
- Active speakers or headphones
- Windows 95/98 with DirectX™5.0 or higher,
or Windows NT 4.0 with ServicePack 3 or higher

DRIVERS.

- Windows 95/98 (MS-DOS 7.0)
- Windows NT 4.0*

SOFTWARE.

- AudioRack
- Software Wavetable
- IBM VoiceType Control

* Min. Requirement: Service Pack 3

HARDWARE INSTALLATION.

Before installing the sound card, please take note of any special points pertaining to the configuration of your computer. Also refer to the handbook of your computer and other expansion cards for their settings.

Please observe the following instructions to ensure a trouble-free installation.

If difficulties arise nevertheless, please reread the relevant chapter in this handbook carefully.

WARNING! – Before opening the case, unplug the mains cable from the wall socket as well as from the PC.

ESD (electrostatic discharge) may damage disk drives, add-on boards and other components. The steps described should only be carried out at an ESD workstation. If one is not available, you can prevent electrostatic discharge by wearing an antistatic arm band and holding it to a metal part of the system housing.

Please note that opening the housing in no way breaches the conditions of guarantee provided that you do not carry out any modifications to the hardware components inside. Any unauthorized expansion of the PC may however affect your rights under the terms of the guarantee. Any such work should be discussed beforehand with your specialist dealer.

Now it's time to arm yourself with a Phillips screwdriver.

And here's what to do, step by step:

- Switch off your PC and all connected periphery, in other words printer, monitor and so on. Leave the AC cord connected for the time being, so that your computer is still grounded.
- Touch the metal chassis at the rear of the PC to ground yourself and discharge static. Now unplug the cord from the AC mains socket.
- Remove the cover from the case of your PC.
- Look for a free PCI expansion slot, remove the screw holding the slot blanking plate and remove the plate. To ensure the optimal function of your sound card, look for an expansion slot that is not immediately next to an already-installed card. Some cards, such as video adapters, can send out signals which can interfere with the sound card.
- Carefully remove the sound card from its packaging and pick it up by the edges with one hand while your other hand is resting on the metal of the PC case.
- This will ensure that your body is completely discharged via your computer without affecting the sound card. Do not touch the components of the card under any circumstances.
- Align the holder at the rear of the sound card in the expansion slot in such a way that the card's connectors are directly in line with the slot's socket.

- Carefully seat the card in the slot. You might have to press the card firmly into the slot to make a good contact. Take care to ensure that the contacts are precisely in line, in order to avoid damaging the sound card or the motherboard in your PC.
- Insert and tighten the screw from the slot cover to secure the sound card in its slot.
- Connect the CD-ROM drive to the sound card with the audio cable.
- Reinstall the cover of your PC case.
- Connect your speakers or hifi stereo system to the sound card.

DRIVER INSTALLATION.

INSTALLATION INSTRUCTIONS FOR WIN95.

Insert the CD-ROM in your CD-ROM drive. After starting Windows a sound card will be detected, click *OK*. Click once in the text window *Copy manufacturer's files from:*, type <CD>: \DRIVERS\WIN9X and click on *OK*. Follow the instructions of the installation program

INSTALLATION INSTRUCTIONS FOR WIN95 (OSR2).

Insert the CD-ROM in your CD-ROM drive. After starting Windows a sound card will be detected, click *Continue*. Click *Other Location*. Type in <CD>: \DRIVERS\WIN9X and click *Continue*. Enter the same path again and click *Continue*. Follow the instructions of the installation program

INSTALLATION INSTRUCTIONS FOR WIN98, WIN98 SE.

Insert the CD-ROM in your CD-ROM drive. After starting Windows a sound card will be detected; click *Continue*. Choose *Search for the best driver for your device (recommended)* and click *Next*. Type in <CD>: \DRIVERS\WIN9X and click *Continue*. Click *Continue* again and in the following dialog click *Finish*. Follow the instructions of the installation program.

INSTALLATION INSTRUCTIONS FOR WINDOWS NT 4.0. (MIN. SERVICEPACK 3)

Please ensure that you are logged on as Administrator when installing the drivers.

Open Control Panel. Click on *Multimedia, Devices* and *Add*. Choose *Unlisted or updated driver*. Type in the path <CD>: \DRIVERS\WINNT40 and click *OK*. Choose the driver and confirm with *OK*. The driver will be installed and the system will perform a reboot.

INSTALLING THE SUPPLIED SOFTWARE.

AUDIO RACK.

Start **SETUP.EXE** in the subdirectory <CD>:\AudioRack from the CD-ROM. Follow the instructions of the installation program

SOFTWARE WAVETABLE.

Start **SETUP.EXE** in the subdirectory <CD>:\WAVETABLE from the CD-ROM. Follow the instructions of the installation program

IBM VOICETYPE CONTROL:

Start **SETUP.EXE** in the subdirectory <CD>:\VOICETYPE\ENGLISH from the CD ROM.